



INSTRUCTION BULLETIN

No. 340424
Machine: ATLV 4300
Published: 7-00/00
System: OPTIONS

NOTE: DO NOT DISCARD the Parts List from the Instruction Bulletin. Place the Parts List in the appropriate place in your machine manual for future reference. Retaining the Parts List will make it easier to reorder individual parts and will save you the cost of ordering an entire kit.

NOTE: Numbers in parenthesis () are reference numbers for parts listed in Bill of Materials.

Installation instructions for kit number 368522

SYNOPSIS / PROBLEM:

This kit contains the parts needed to install a cab kit on the TNV model ATLV 4300 litter vacuum.

Please follow step-by-step instructions.

SPECIAL TOOLS / CONSIDERATIONS: Hoist, Hand drill, .62 in, .438 in, .375 in and .219 in. dia. drill bits

(Estimated time to complete: 2 hours)

PREPARATION NOTICE: THIS OPEN CAB KIT IS ONLY FOR USE WITH MACHINES EQUIPPED WITH FOAM FILLED TIRE KIT 367630. THE FOAM FILLED TIRE KIT INCREASES STABILITY FOR MACHINES EQUIPPED WITH OPEN CAB KIT.

(Refer to FIG. 1 thru 15)

FOR SAFETY: Before leaving or servicing machine, stop on level surface and set parking brake. Then turn off machine and remove key.

1. Disconnect battery cables from machine.



WARNING: Always disconnect battery cables from machine before working on electrical components.

INSTALLATION:

(Refer to FIG. 1 thru 15)

1. Raise the operator's seat and locate the seat prop rod. (Refer to FIG. 1)
2. Remove the old seat prop rod, and replace with the new seat prop rod (16). (Refer to FIG. 1)
3. Lower the operator's seat.
4. Remove both front and rear sections of vacuum hose from vacuum hose support arm.
5. Remove nut and hex screw, and remove support arm from machine. (Refer to FIG. 2)
6. Carefully hoist open cab (1) into mounting position on the machine.
7. Loosely install mounting hardware supplied with cab in open cab rear mounting holes. (Refer to FIG. 3 and 4).
8. Gently continue lowering open cab (1) until front mounts are resting in position on machine. Leave a .75 inch (19 mm) gap between cab and top of headlights. (Refer to FIG. 3, 6 and 7)

9. Using the open cab (1) as a template, mark and drill four .438 inch diameter front mounting holes in the front shroud. (Refer to FIG. 3, 6 and 7)
10. Loosely install all front mounting hardware (8, 9 and 10). (Refer to FIG. 3, 6 and 7)
11. FOR MACHINES WITH FENCE LINE HEAD OPTION: Install hanger bracket (21) on right side of cab with the same cab mounting bolts. (Refer to FIG. 3 and 7)
12. Tighten all open cab mounting hardware (8, 9 and 10) after hardware is installed.
13. Line up rear window (3) with top two mounting holes in cab. (Refer to FIG. 3 and 4)
14. Using rear window (3) as a template, drill four .219dia. holes in roll bar.
(Refer to FIG. 3, 4 and 5)
15. Loosely mount rear window (3) in place with mounting screws (6), stainless washers (5) sleeves (23), and rubber washers (24). (Refer to FIG. 3, 4 and 5)

NOTE: The rubber washers are necessary on the four lower mounting holes only.

16. Tighten all window mounting screws (6).
17. Install resettable circuit breaker six (14) and circuit breaker boot (15) in circuit breaker panel. (Refer to FIG. 3)
18. Drill one .62 inch hole in right side shroud for windshield wiper electrical connections.
(Refer to FIG. 8 and 9)

NOTE: Some machines will already have this hole drilled.

19. Install rubber grommet (12) in hole. (Refer to FIG. 3, 8 and 9)
20. Connect wire from red wire from cab harness to circuit breaker six(14). Connect main harness wire 2E(brn) to circuit breaker six.
21. If cab is together with road light kit, connect YELLOW #35 to LH turn signal, and PURPLE #36 to the RH turn signal. Connect BLACK wire to ground using mounting screw for light. Use four around extension wires (two per light), to make these connections.
22. If machine has work lights installed, lower the work lights on the ROP bar so the top of the light is lower than the roof of the cab. (Refer to FIG. 12)
23. Use bracket as template, to drill four 7/32 dia. pilot holes. Connect 41GRN and 13SBLK to RH work light, and 24ORA and 13RBLK to LH work light.
24. Connect battery to machine. Check options for proper operation.
25. Reflectors are installed on cab models without turn signals. Mount reflectors to front of cab, covering the holes for turn signals.
26. Move hose guide and tube weldment to new mounting bracket (17). (Refer to FIG. 2 and 4)
27. Install new vacuum hose mounting bracket (17) in vacuum support arm.
(Refer to FIG. 2 and 3)
28. Move both gas spring rear mountings forward to their new locations on the vacuum support arm. (Refer to FIG. 2 and 3)
29. Remount vacuum support arm onto machine with new spacer tube (7). (Refer to FIG. 2 and 3)

30. Reassemble vacuum hose in vacuum hose support arm, replacing rear section with new, longer vacuum hose (25). (Refer to FIG. 3)

31. Using rear wheel weights (2, 4) as templates, mark and drill 3/8 inch mounting holes for wheel weight fasteners. (19, 26 and 27) under rear fenders. (Refer to FIG. 3, 14 and 15)

NOTE: Some machines may already have holes pre-drilled and will not need to be reworked.

32. Install wheel weights (2, 4) under rear fenders with hex screws (19), washers (26), and hex nuts (27). (Refer to FIG. 3, 14 and 15)

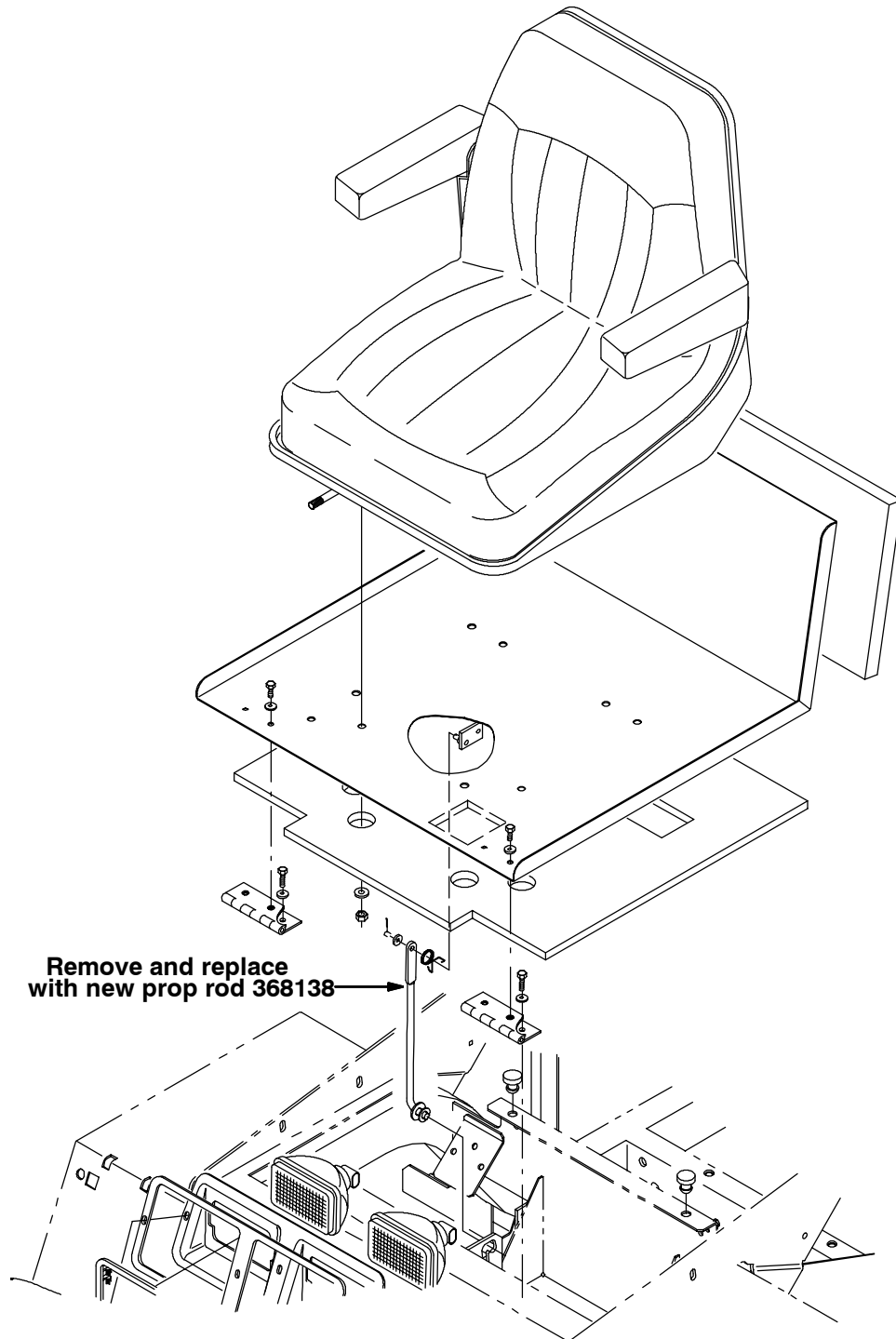


FIG. 1 - NEW SEAT PROP ROD INSTALLATION

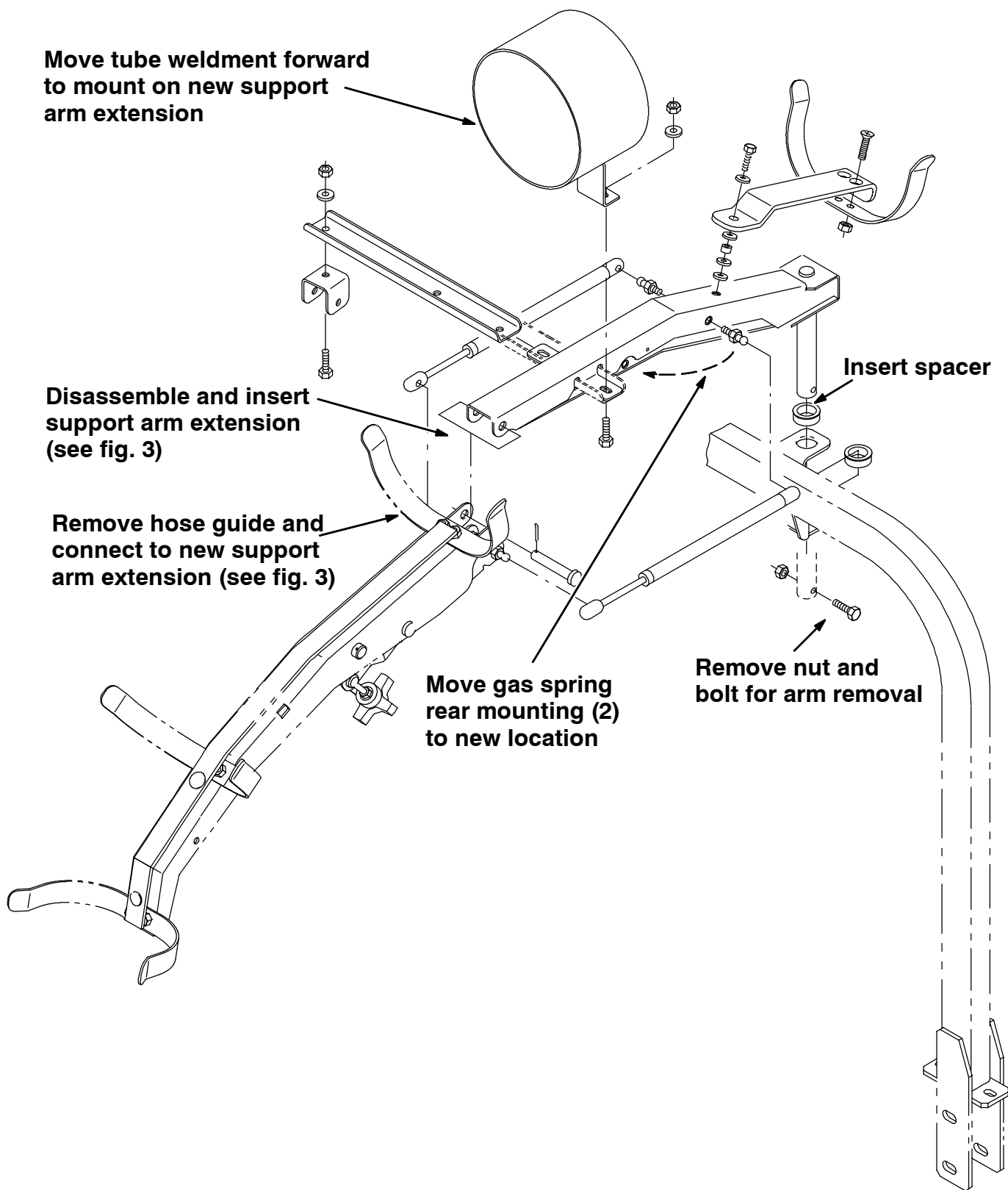


FIG. 2 - VACUUM HOSE SUPPORT ARM BREAKDOWN

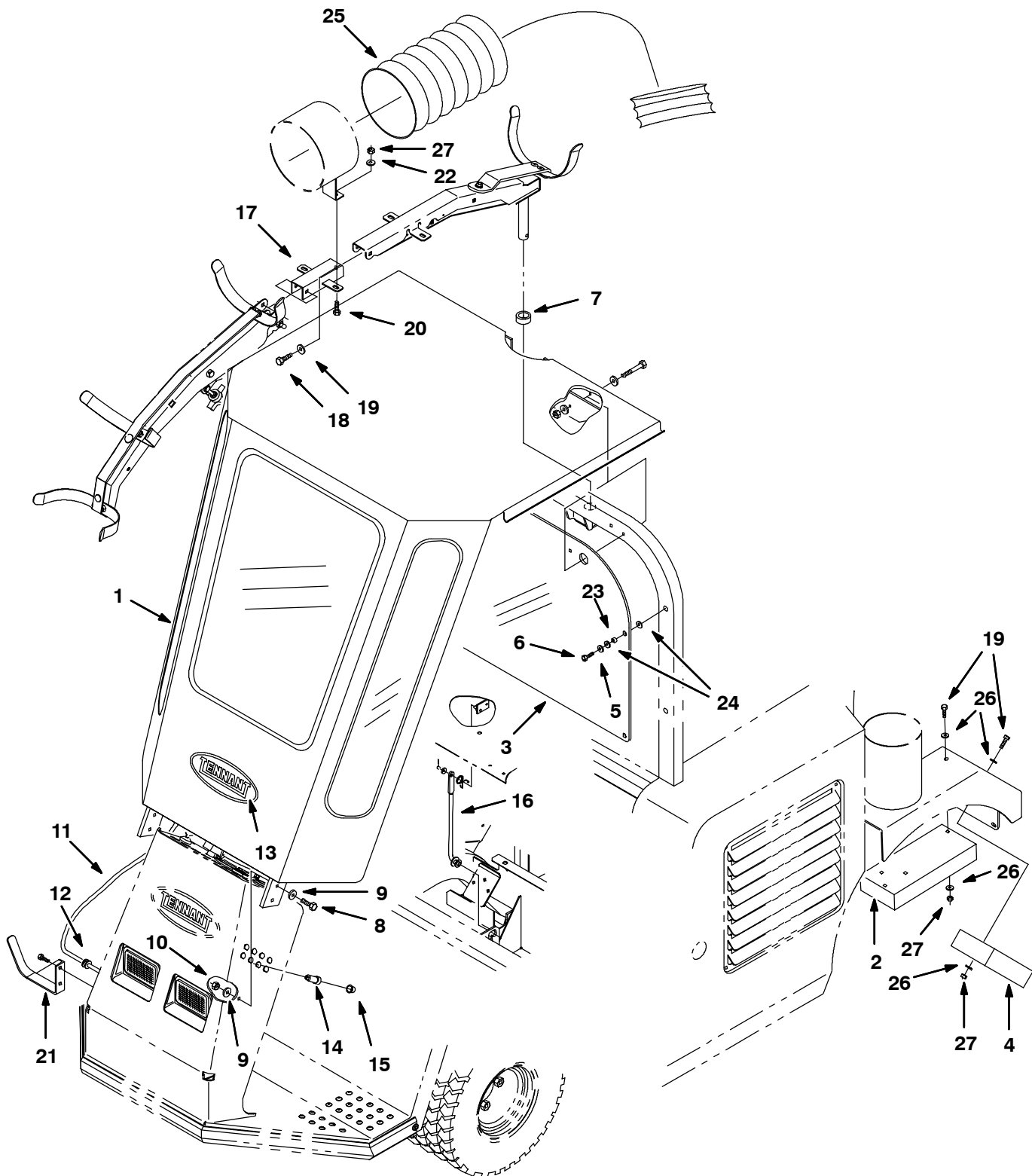


FIG. 3 - OPEN CAB KIT

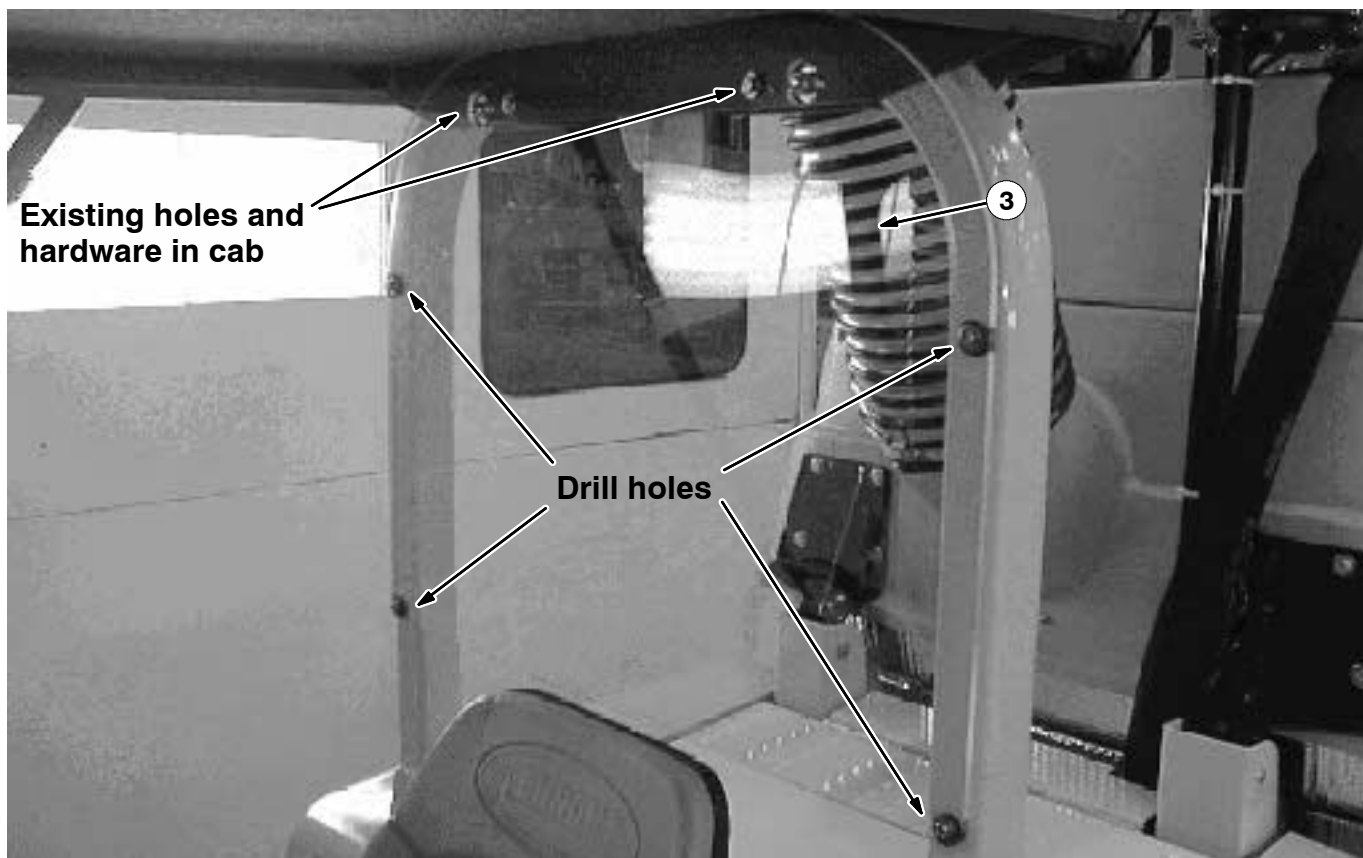


FIG. 4 - REAR WINDOW INSTALLATION

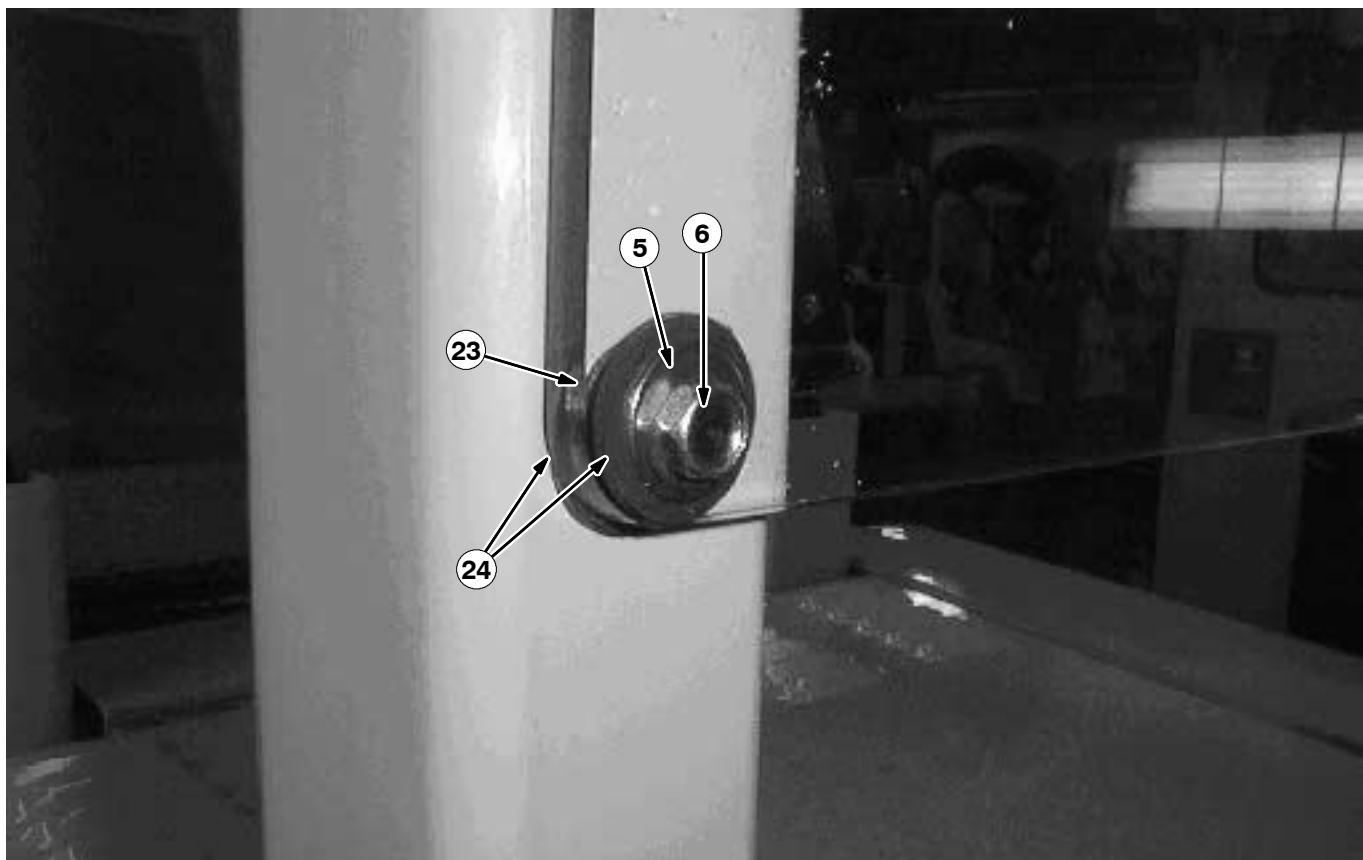


FIG. 5 - REAR WINDOW INSTALLATION

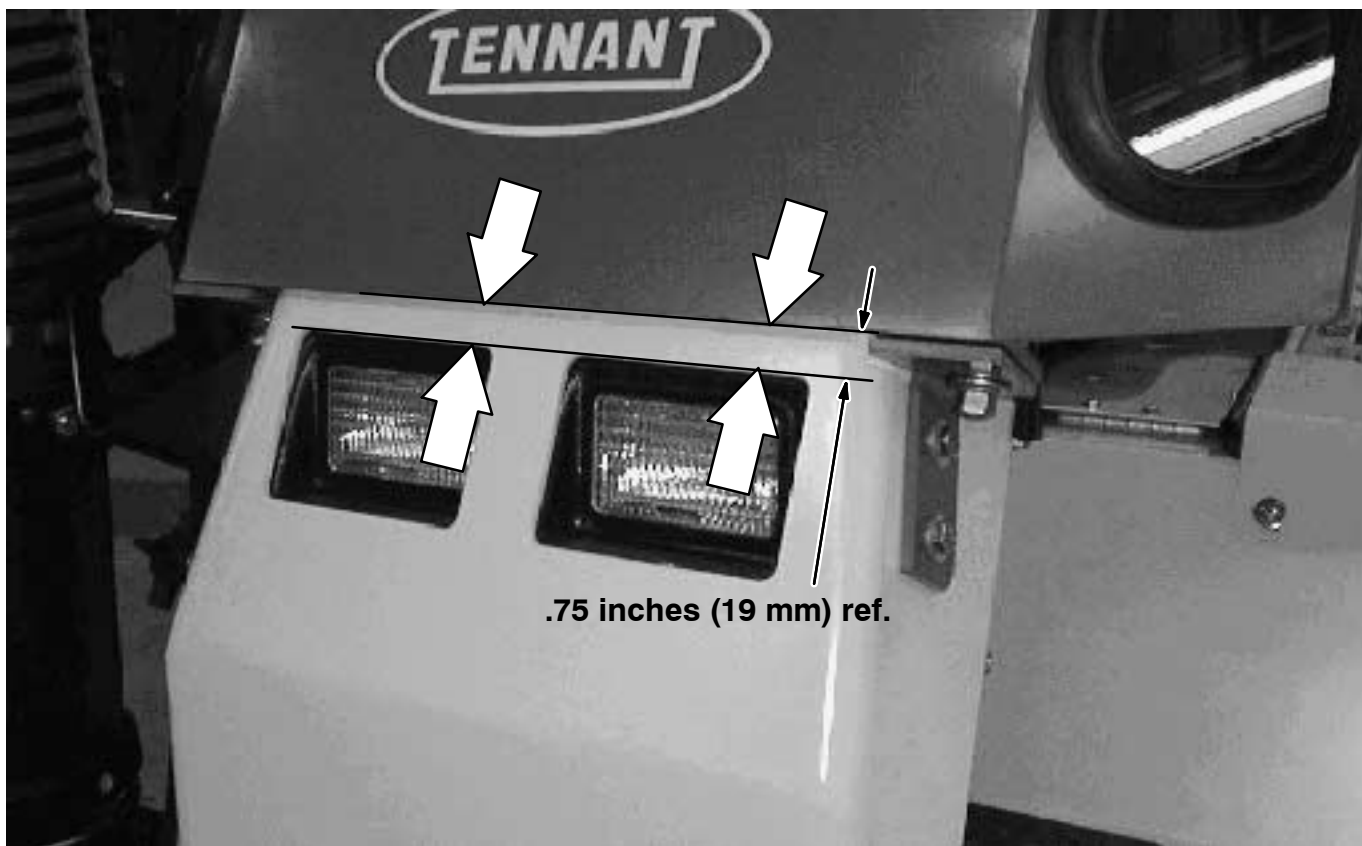


FIG. 6 - OPEN CAB FRONT MOUNTING DIMENSIONS

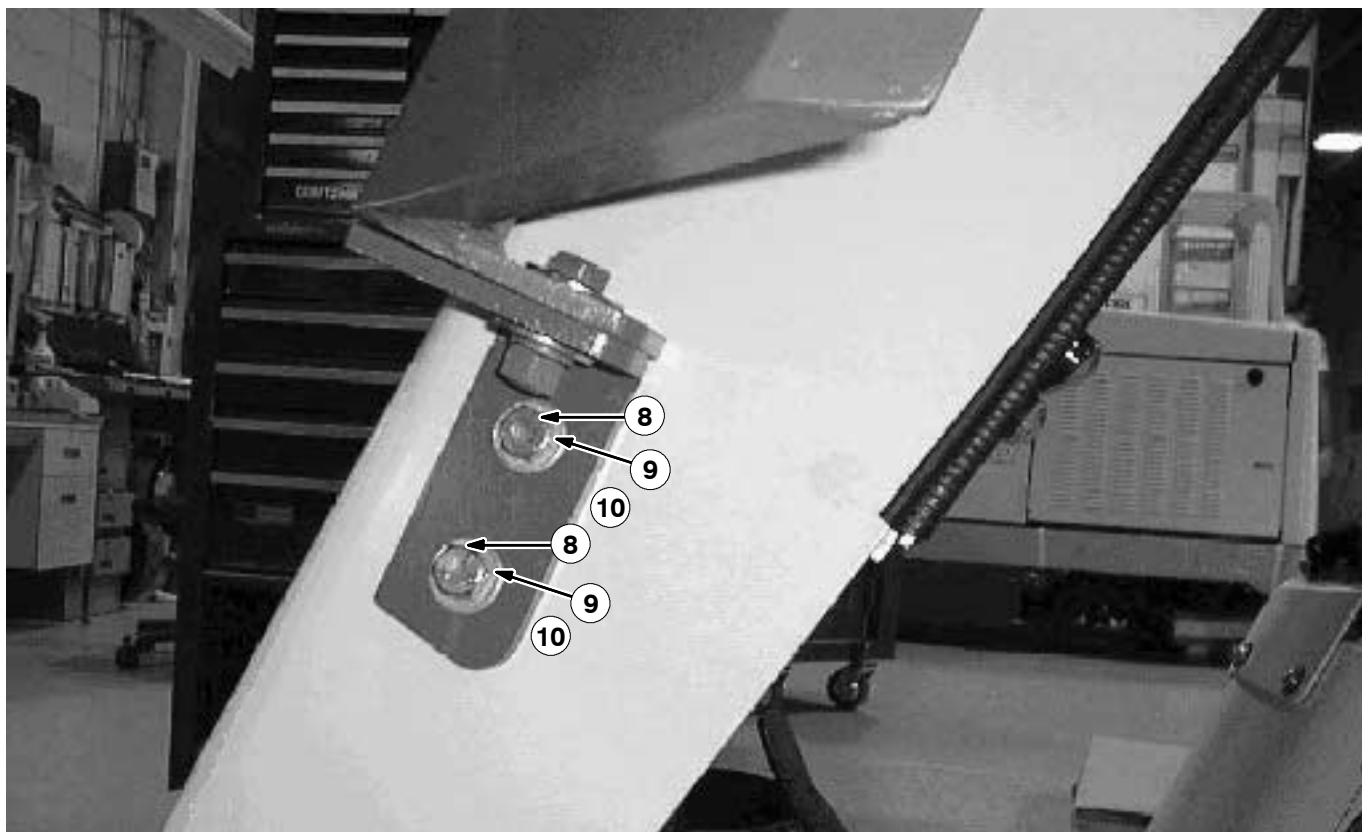


FIG. 7 - OPEN CAB FRONT END INSTALLATION

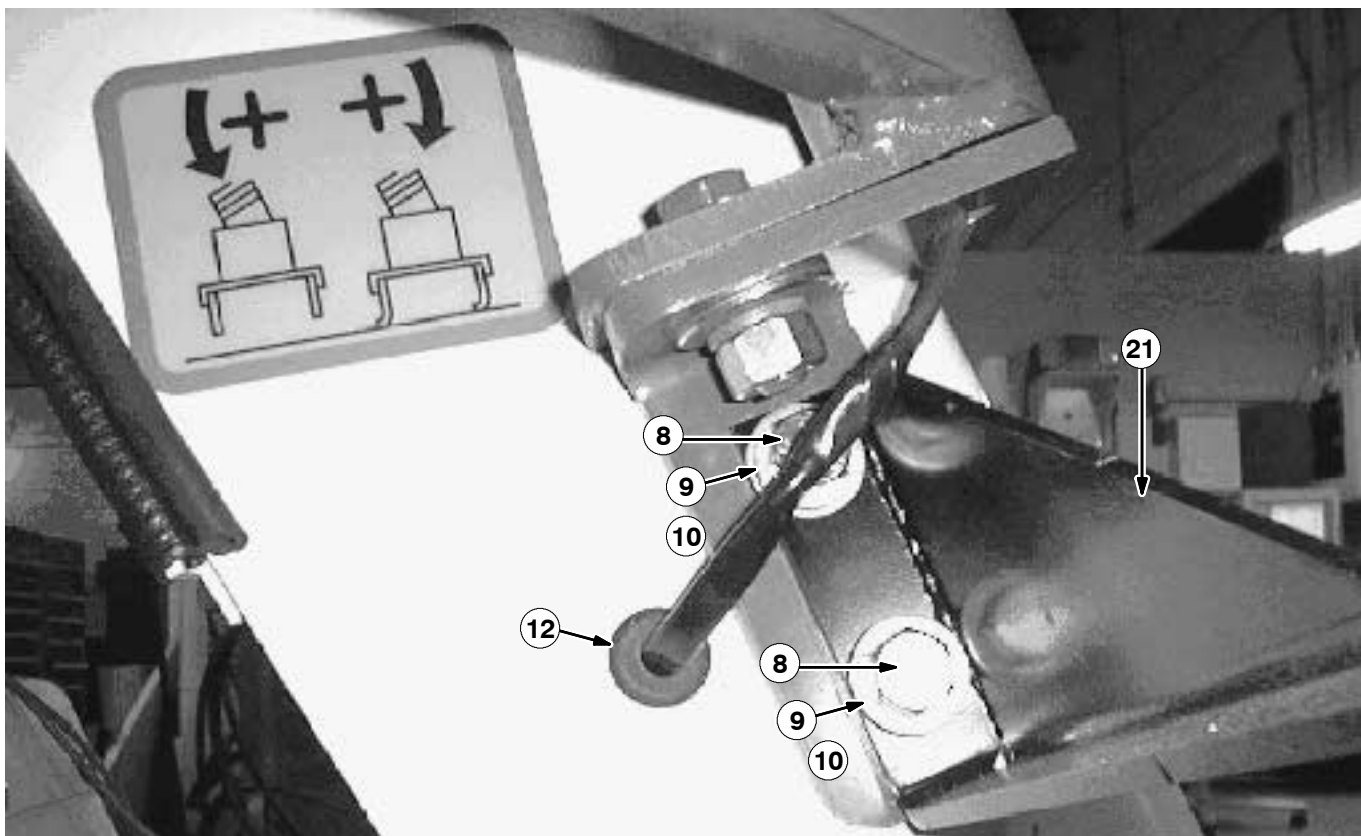


FIG. 8 - WIRE HARNESS INSTALLATION

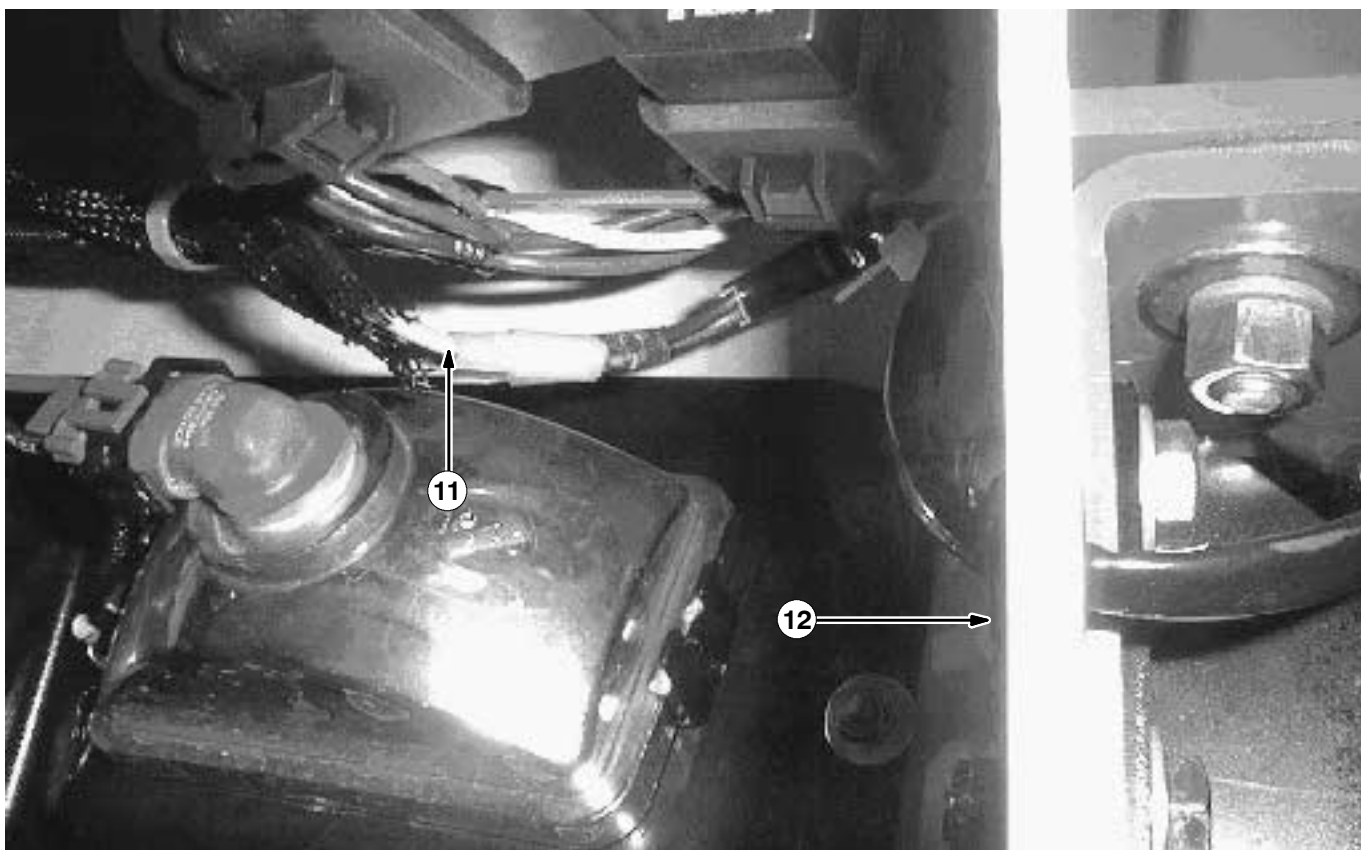


FIG. 9 - WIRING HARNESS INSTALLATION



FIG. 10 - REFLECTOR INSTALLATION



FIG. 11 -TURN SIGNAL INSTALLATION

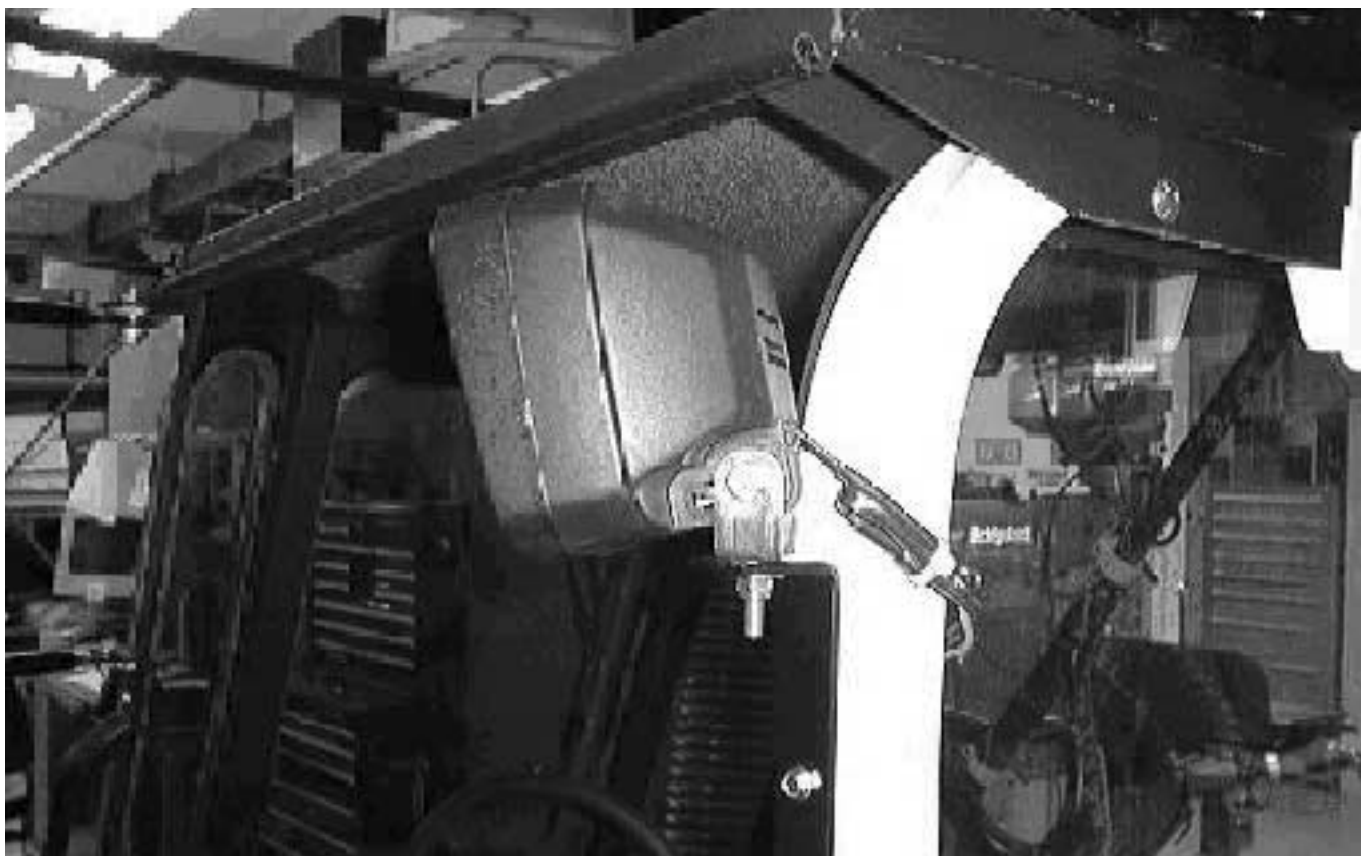


FIG. 12 -WORK LIGHT INSTALLATION



FIG. 13 -COMPLETE OPEN CAB INSTALLATION

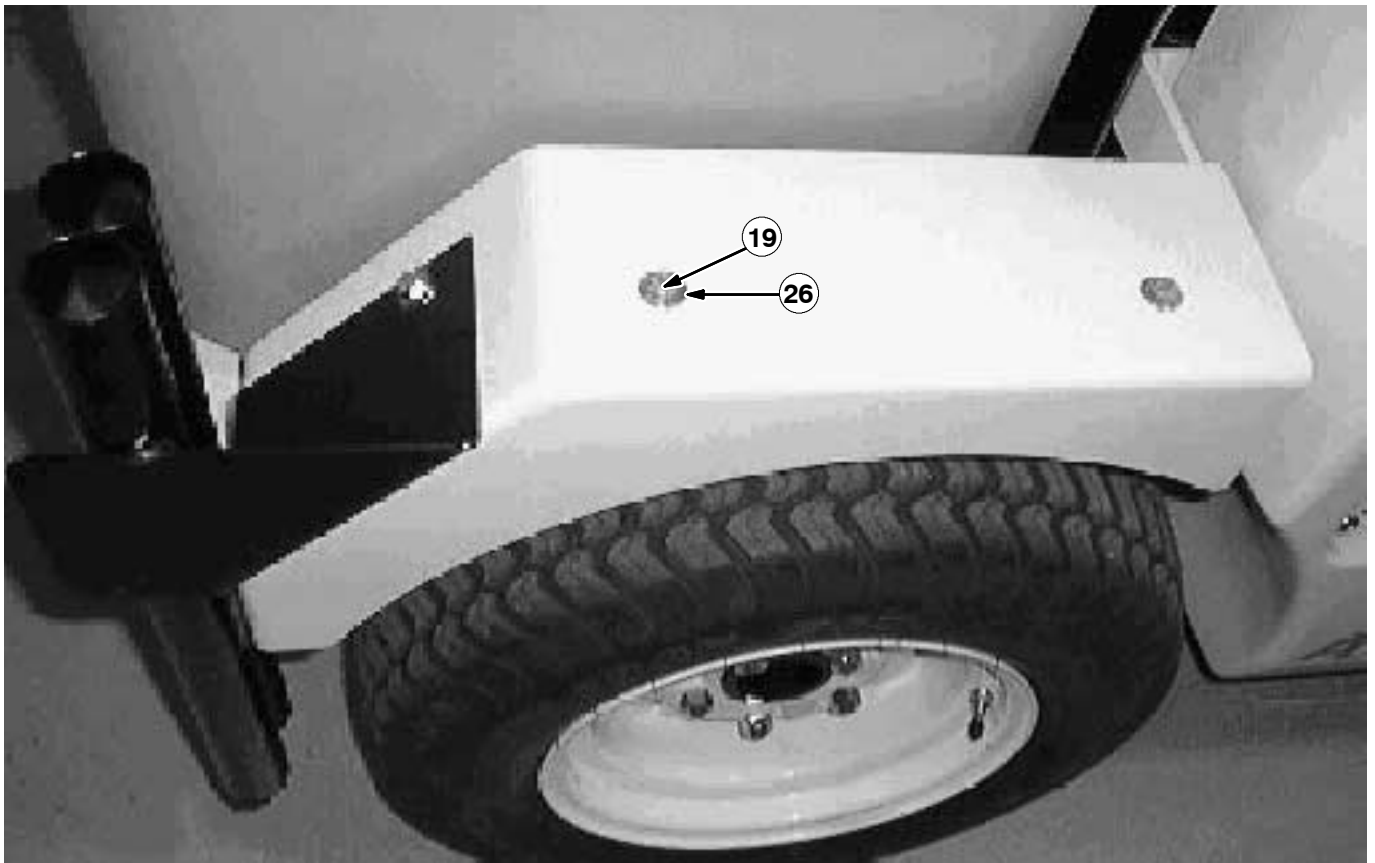


FIG. 14 - WHEEL WEIGHT INSTALLATION

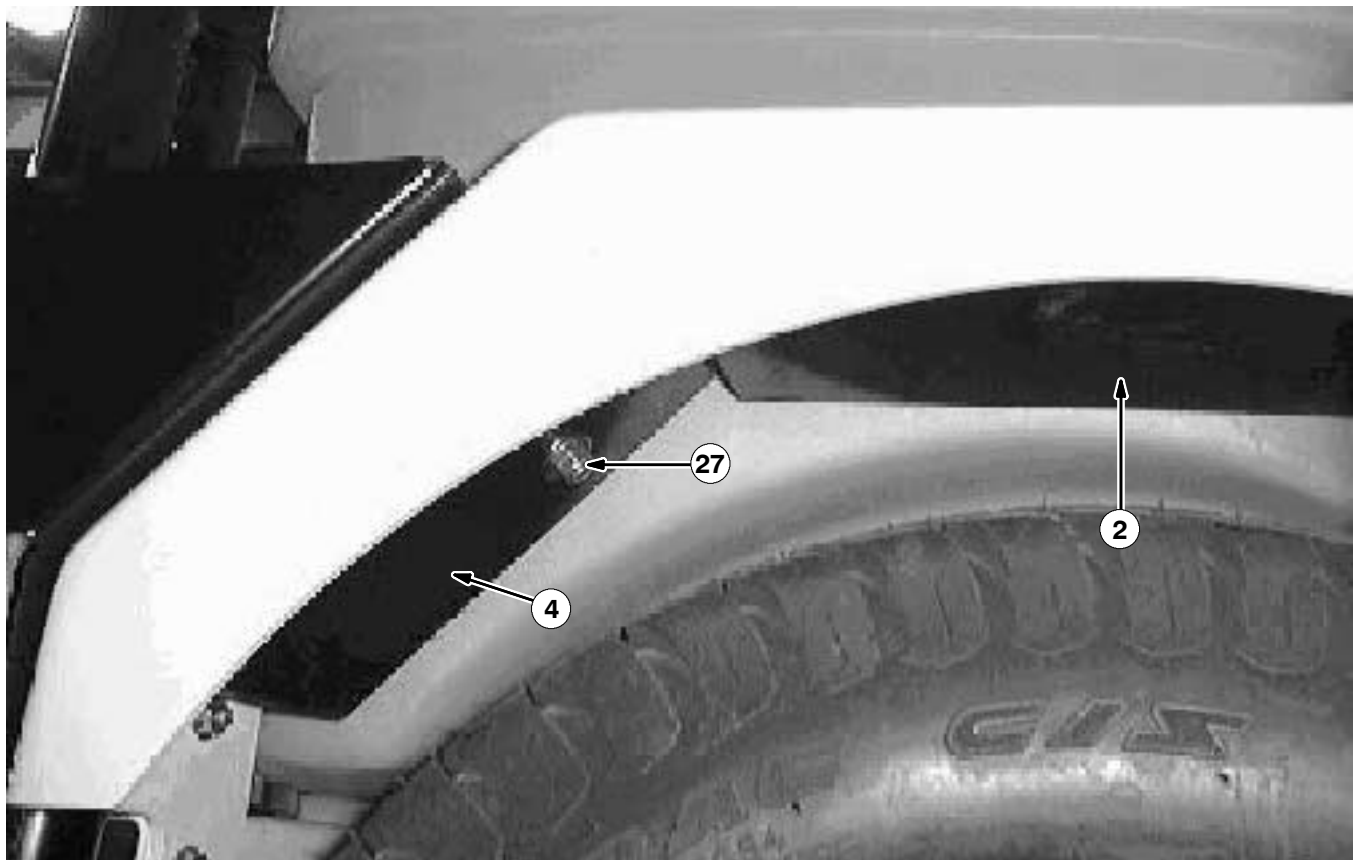


FIG. 15 - WHEEL WEIGHT INSTALLATION

BILL OF MATERIALS FOR ATLV 4300 OPEN CAB KIT 368522

Ref.	TENNANT Part No.	Description	Qty.
1	368020	Cab, Open	1
2	368183	Weight, stabilizer	2
3	368414	Pane, Window	1
4	368182	Weight, stabilizer	2
5	01684	Washer, flt .25 SS SE	6
6	24594	Scr, HXFMG .25-20 X .75 SE	6
7	368109	Tube, 1.5 OD 1.02B .62L STL	1
8	77347	Scr, Hexss M10 X 1.5 35 SE	4
9	01686	Washer, flt .38 SE	9
10	41430	Nut, Hxlcnyln M10 X 1.5 SE	4
11	367406	Harness, Windshield wiper	1
12	10632-11	Grommet, rubber, .38ID, For .19matl	1
13	86877	Label, TENNANT logo, oval, 10.5 wht letrs	1
14	57803	Breaker-circuit, 15 resetbl	1
15	57751	Boot, circuit breaker	1
16	368138	Rod, prop, seat	1
17	368142	Bracket, mtg, vacuum hose	1
18	09028	Scr, hexssm 10 X 1.5 25 SE	1
19	09026	Scr, hex sm M8 X 1.25 40	7
20	09740	Scr, hex sm 8 X 1.25 20 SE	2
21	368144	Bracket, hanger	1
22	01685	Washer, flt .31 SS SE	24
23	222516	Sleeve, SS, tube, .50D, .3L,	4
24	46147	Washer, .88D .06 NEOPRE	8
25	368165	Hose, 8.0	1
26	09767	Scr, hexsm M8 X 1.25 70	8
27	08709	Nut, hxlocnyln M8 X 1.25	15

TENNANT COMPANY
P. O. Box 1452
Minneapolis, MN 55440-1452